

Patient Instructions



Patient name

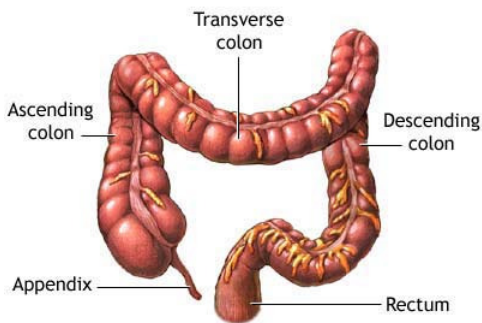
Date and time of procedure

Barium Enema Study

Please report to the Radiology Department on the 3rd floor at Christie Clinic, 101 W. University Ave. in Champaign. 217-366-1285.

What does this test show?

Your doctor has requested a barium enema examination of the colon (large intestine) and rectum. The bowel does not show up well on plain X-rays. However, if the bowel wall is coated with barium, a white liquid which shows up on X-rays, it makes it possible to examine the bowel. These x-rays will allow the doctor to observe and record the actual condition and function of your large intestine (colon).



ADAM.

How do I prepare for the study?

In order for your doctor to see your colon clearly, it is very important for you to empty and cleanse your colon. Therefore, you need to carefully follow the barium enema preparation instructions. Your doctor's office will instruct you to follow a clear liquid diet and pick up some laxatives to take from the pharmacy for the day before your study. If you have any questions about this preparation, you may call your physician, the pharmacy, or the radiology department.

What to expect during the test:

In a private cubicle, you will be asked to remove your clothing and put on a hospital gown. You will be taken to the X-ray room and asked to lie down on the X-ray table on your side. You may receive an enema to further cleanse your colon. A soft plastic tube is gently passed into your rectum. During the examination, liquid barium will flow through the tube to coat the bowel wall. Air may be passed through the tube to expand the bowel and make the bowel wall easier to see. You may feel as if you want to go to the toilet. It's important to try and hold the barium fluid and air in by keeping the muscles of your bottom very tight. Images of your bowel will be displayed on a TV screen and you may be moved into different positions, both to help the barium flow and to see as much of the bowel as possible. Several X-ray images will be taken with you in different positions, some with you lying on your side and some with you upright. When all the images are taken, the tube will be removed. Then you will be allowed to leave the X-ray room and go to the toilet.

This examination may cause you some discomfort. You may feel cramp-like pains for a short while.

After the examination

The radiologist will interpret your x-ray films and send the report to your physician. The technologist will instruct you to resume your normal diet and drink plenty of water. The barium will be eliminated from your body over 1 to 3 days, resulting in "white" stool. It is not required, but you may take a stool softener if needed. If you do not have a bowel movement within three days, please call your physician.

How do I get the results?

Your physician will contact you by phone or mail as soon as your test results are received and reviewed.

Please return for a follow-up appointment with

Dr. _____

On _____ at _____

If you have not received your result in two weeks following this study, please contact your physician's office.

Note to women of childbearing age: Ideally, an abdominal radiological examination of women of childbearing age should be performed during the first days following the onset of menses (period). This will minimize the possibility of irradiation of an embryo. In practice, medical needs should be the primary factors in deciding the timing of the examination. If there is any possibility that you may be pregnant, please inform your physician.